

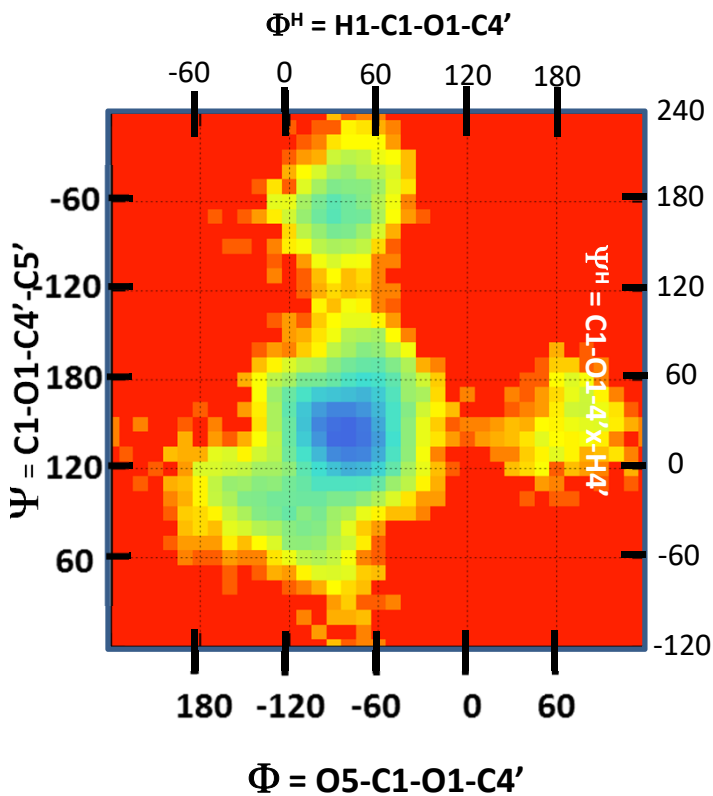
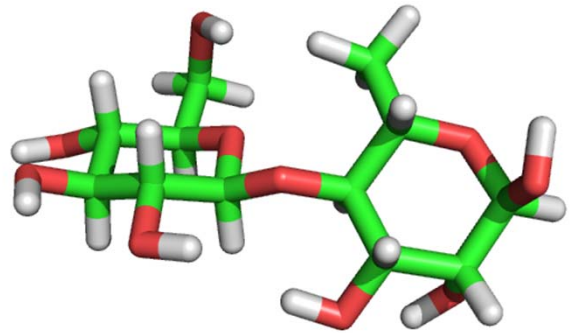
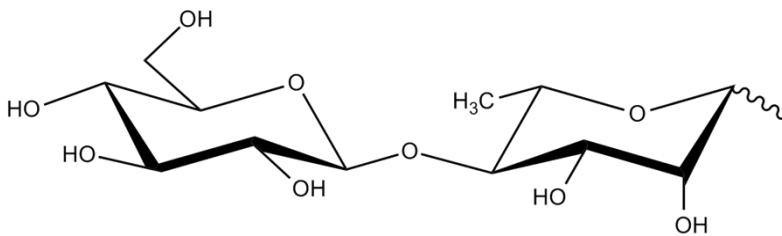
$\beta$ -D-Glcp 1-4 L-Rhap



$\beta$ 1-4



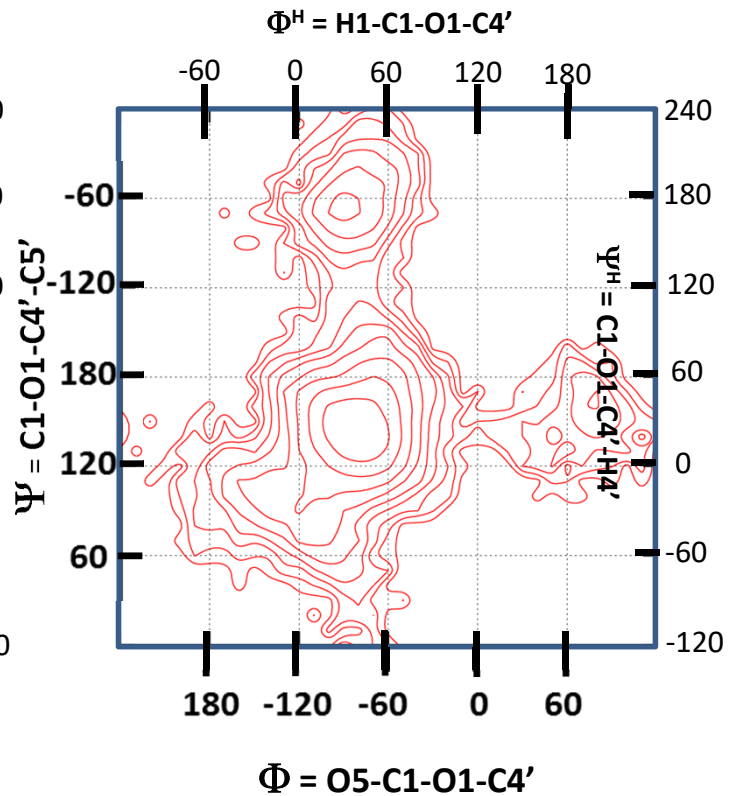
Glc  $\beta$ 1-4 Rha



Conf 1 ( $\Phi, \Psi$ ) = -90; 150

Conf 2 ( $\Phi, \Psi$ ) = -90; -60

Conf 3 ( $\Phi, \Psi$ ) = 70; 150



Conf 1 ( $\Phi^H, \Psi^H$ ) = 30; 30

Conf 2 ( $\Phi^H, \Psi^H$ ) = 30; 180

Conf 3 ( $\Phi^H, \Psi^H$ ) = 190; 30