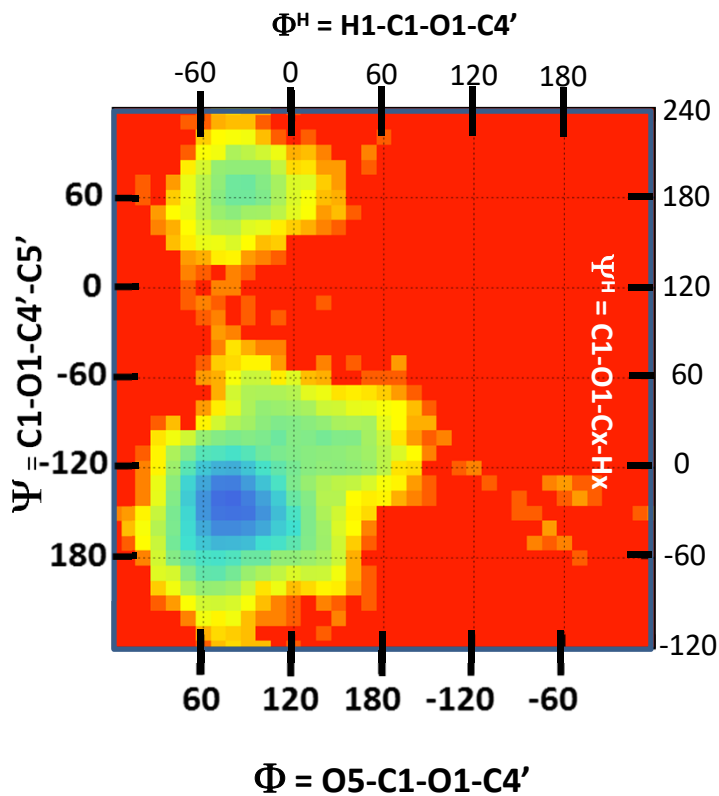
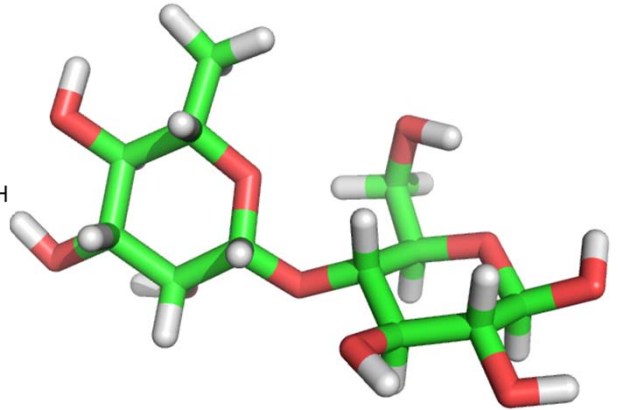
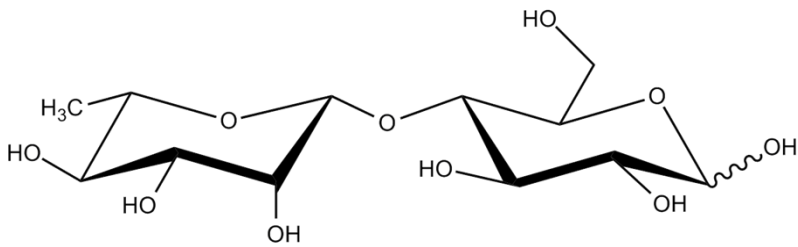


β -L-Rhap 1-4 D-Glcp

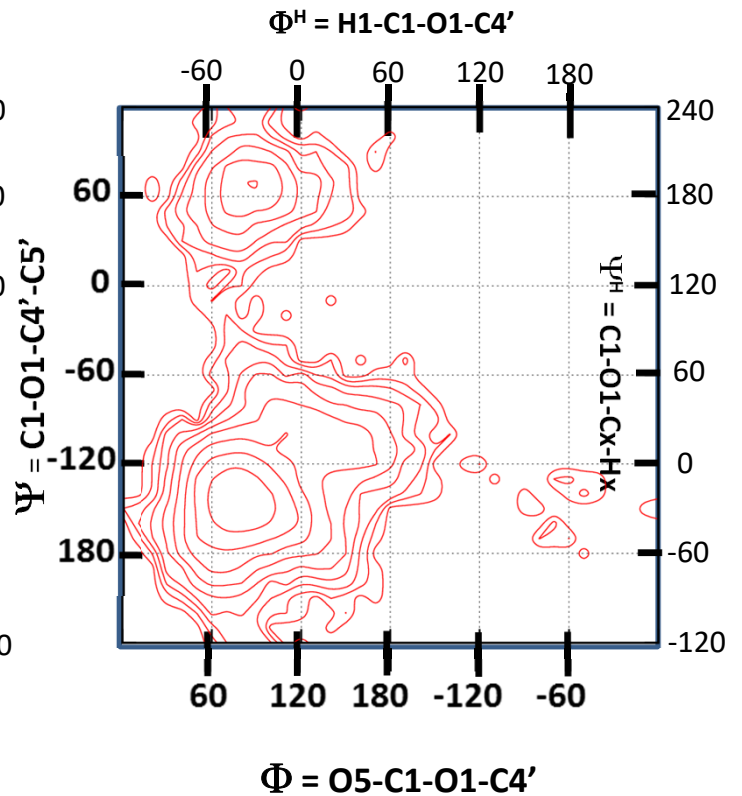


Rha β 1-4 Glc



Conf 1 (Φ, Ψ) = 70; -150

Conf 2 (Φ, Ψ) = 90; 70



Conf 1 (Φ^H, Ψ^H) = -50; -30

Conf 2 (Φ^H, Ψ^H) = -30; 190